
CUBRID Manager R4.0

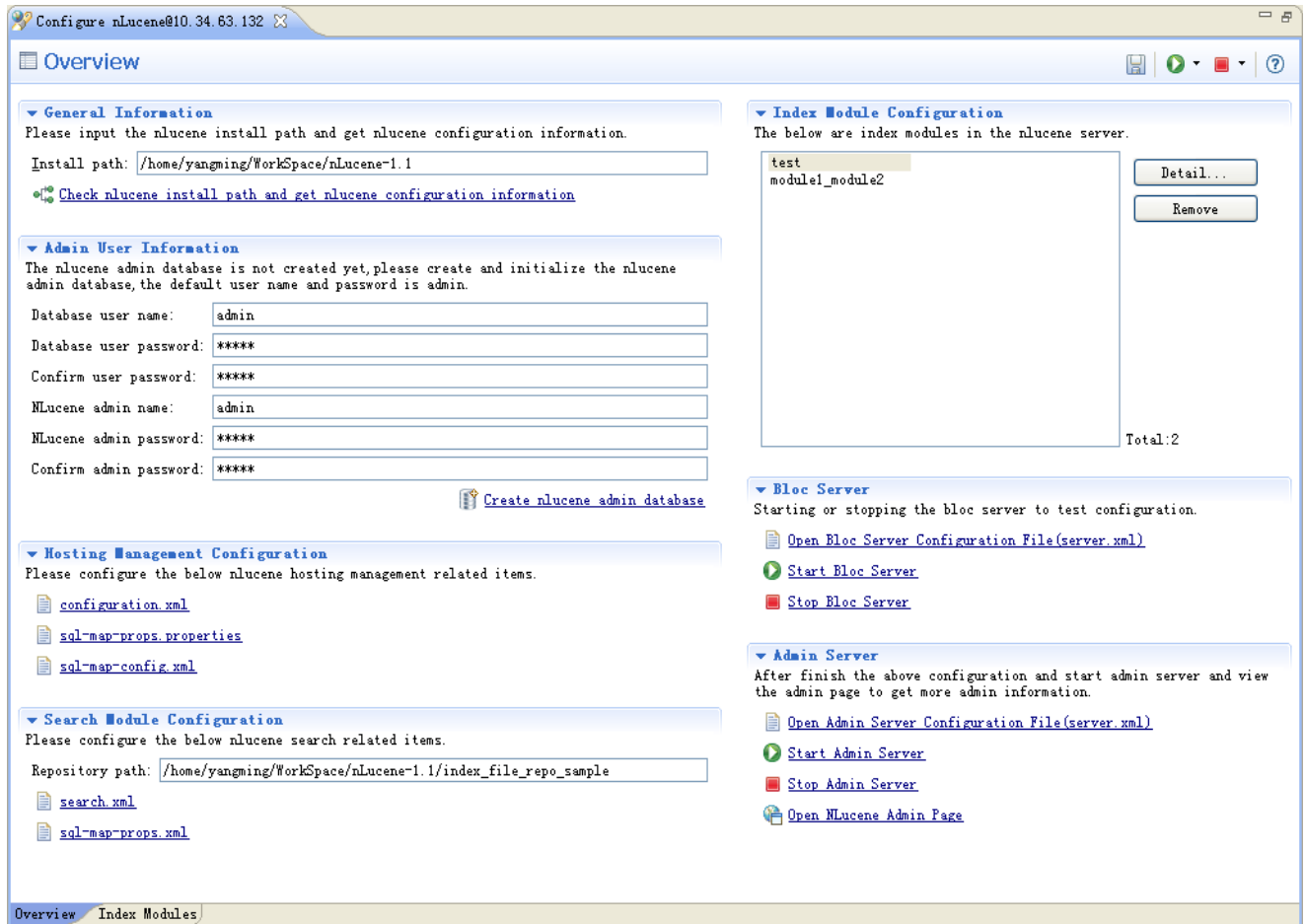
Release Note

Table of Contents

1. NEW FEATURES	3
Add nLucene plug-ins to support nLucene configuration functions for CUBRID database	3
Add error trace function for broker error log, now only support SYNTAX ERROR type log	3
Add encrypt and decrypt function for sent message and received message	4
Add property editor to support that edit the configuration file(cubrid.conf,cm.conf,cubrid_broker.conf,cubrid_ha.conf),export and import configuration file	4
Support new cubrid_ha.conf configuration file parameter	6
Add host navigator menu and dashboard navigator menu	8
Add navigator search combo	12
Can customize the prompt function when CUBRID Manager exit	12
Can customize the prompt function when query editor exit	13
Can customize keywords and functions name lowercase/uppercase when edit SQL in query editor	15
Can maximize and minimize the SQL editor panel and the query result panel and log panel	16
Can customize the query editor layout style	16
SQL quick help function in query editor	18
Press Ctrl+Enter can execute the SQL in cursor position	18
New query editor more conveniently	18
Add table columns and index navigator function and the related actions	18
Add the table context menu in schema information panel	19
Can copy the column name or table name or view name by CTRL+C	19
Add a new tool "cm_admin" in LINUX environment to control CUBRID Manager user	20
2. ENHANCED FEATURES	21
Improve the SQL DDL/DML copy and paste functions	21
Improve the drag and drop functions	21
Improve the import data functions	22
Improve to export data functions	24
Improved the login way and can save password in local and auto login by double click host or database	25
Can sort the host by drag and drop	26
Support index prefix length	26
Support the new broker parameters and server parameters configuration	27
Improve the HA dashboard function to support HA	27
Support the new added functions and keywords in query editor	28
When build and release the CUBRID Manager, add all JDBC driver	28
Category the configuration parameter related properties	28
Improve the query editor for font setting functions	29
Add [Close],[Close Others],[Close All] menu item for the query editor result tab and plan result tab	30
Improve log related functions	30
l the trigger created or edited UI	31
Improve the serial created or edited UI	32
3. CHANGED FEATURES	33
When import data, set the default thread count is 5 and default file type is csv.	33
When edit or add table column, if column data type is VARCHAR or NCHAR VARYING or BIT VARYING, the size is 4096 defaultly.	33
When open the query editor, the auto commit is unchecked defaultly. When checked, show caution icon.	33
When broker access_mode is SO, the JDBC URL can not add host ip.	33
Adjust the table menu, put the dangerous menu to the next level menu	33
Fix bug that when admin login and set broker port, the broker port can not be saved.	34
Fix bug that When change the query editor panel size, the query editor toolbar can not show completely.	34
When add table or show table, can differentiate the primary key index and other index	34
Fix bug that if the data type is datetime, the data can not show 24 hours am or pm correctly	35
Fix bug that switch the next page in query editor result panel, the content flicker	35
Fix bugs that the SQL style can not show correctly in the below case	35

1. New Features

Add nLucene plug-ins to support nLucene configuration functions for CUBRID database

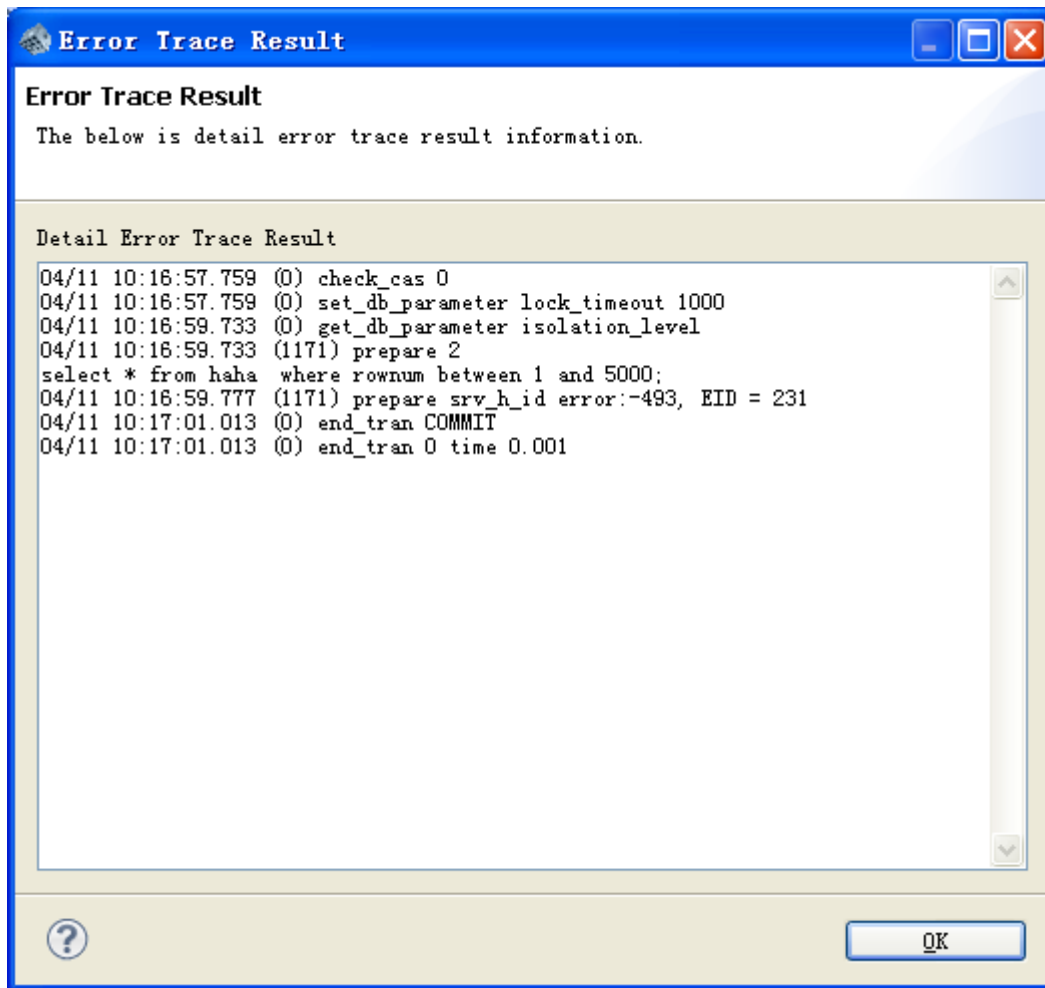


Add error trace function for broker error log, now only support SYNTAX ERROR type log

1. Open the broker error log editor, open the context menu for SYNTAX ERROR

No.	Time	Error type	Error code	Tran id	Error id	Error message
1	01/12/11 10:57:59.368	SYNTAX ERROR	-494	2	31	Semantic: Class
2	01/12/11 10:57:59.369	SYNTAX ERROR	-494	2	32	Semantic: Class
3	01/12/11 10:57:59.548	ERROR	-503	2	33	Trigger "testtr:
4	01/12/11 10:57:59.578	SYNTAX ERROR	-494	2	34	Semantic: Class
5	01/12/11 10:57:59.579	SYNTAX ERROR	-494	2	35	Semantic: Class
6	01/12/11 10:57:59.759	ERROR	-503	2	36	Trigger "testtr:

2. Error Trace Result



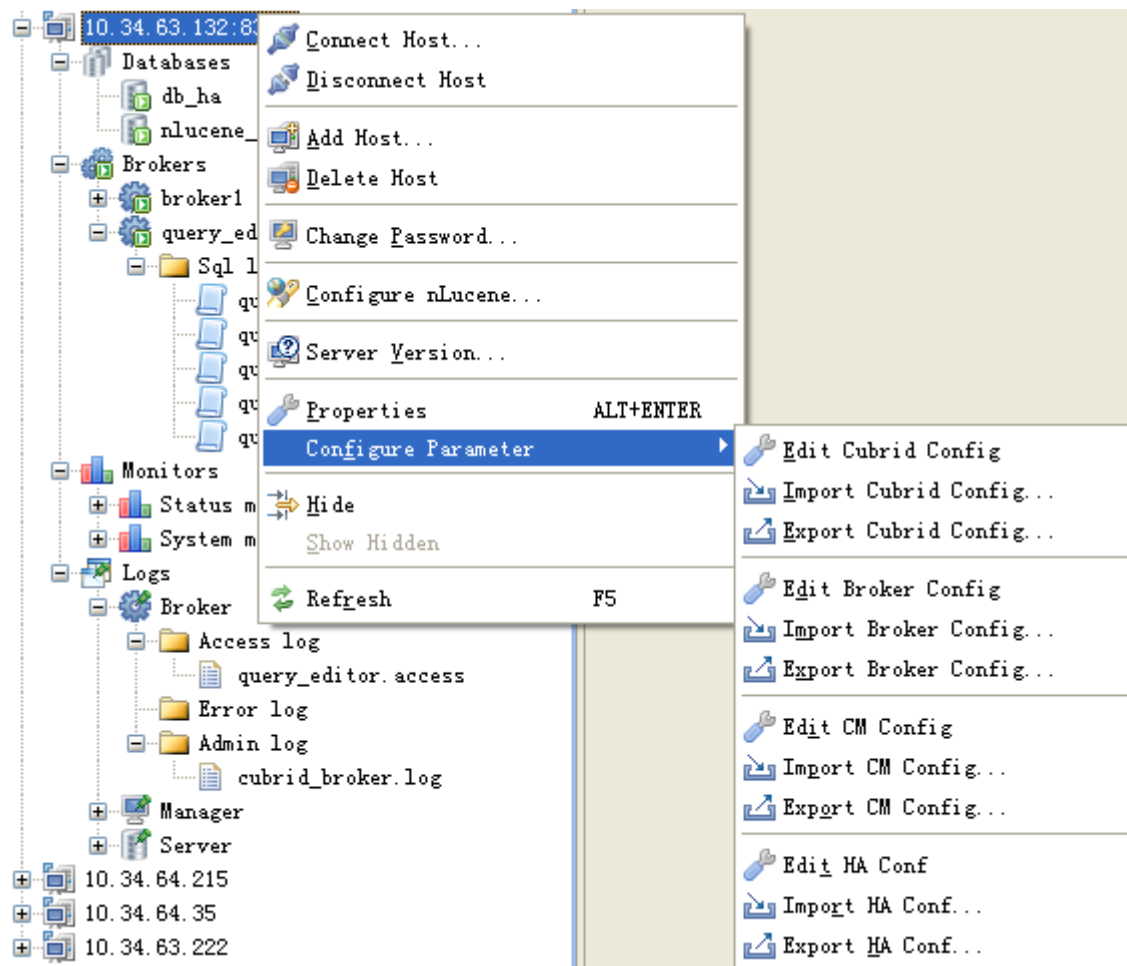
Add encrypt and decrypt function for sent message and received message

Encrypt and decrypt all user related message

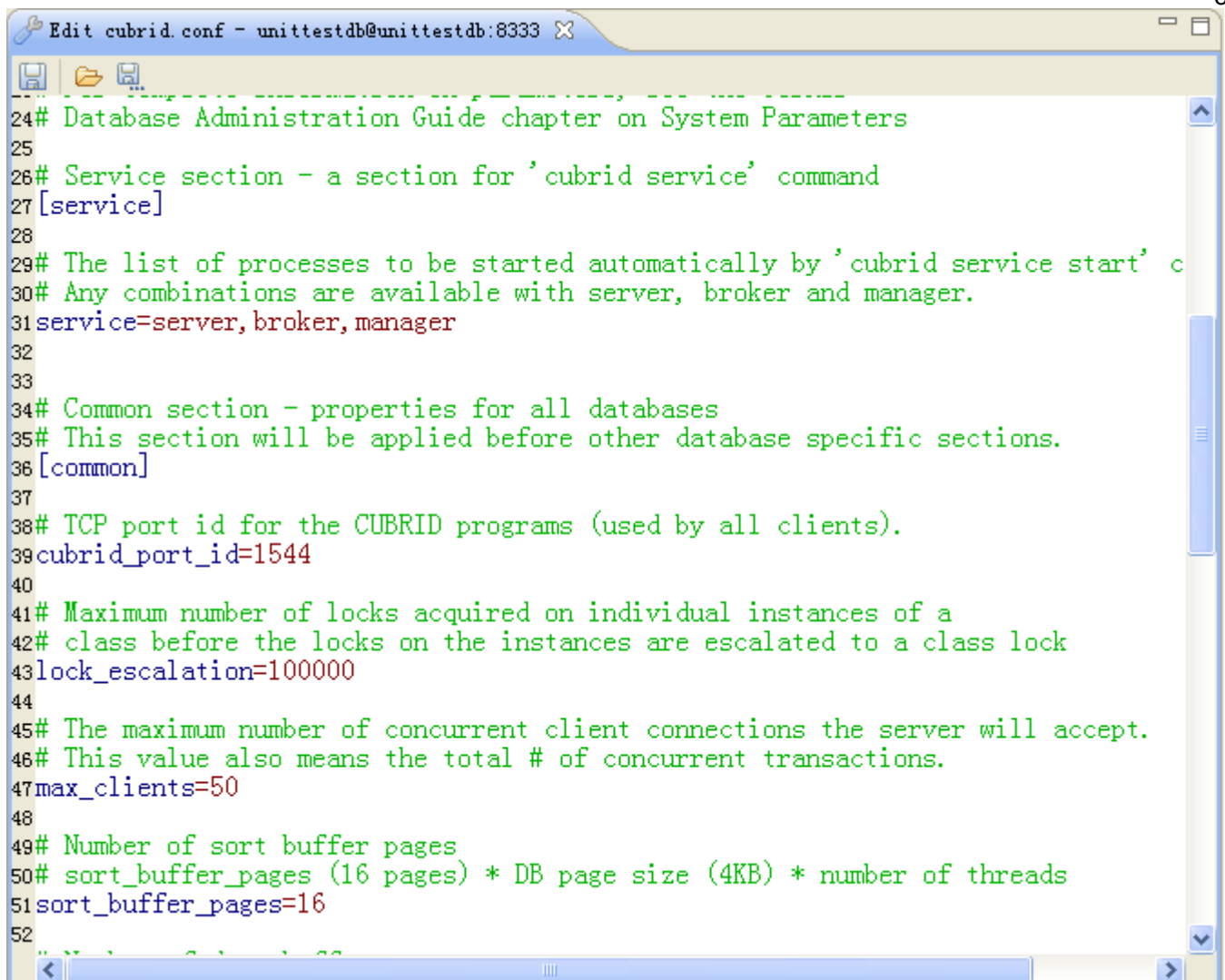
Add property editor to support that edit the configuration

file(cubrid.conf,cm.conf,cubrid_broker.conf,cubrid_ha.conf),export and import configuration file

Configuration Parameter menu:



Configuration parameter editor



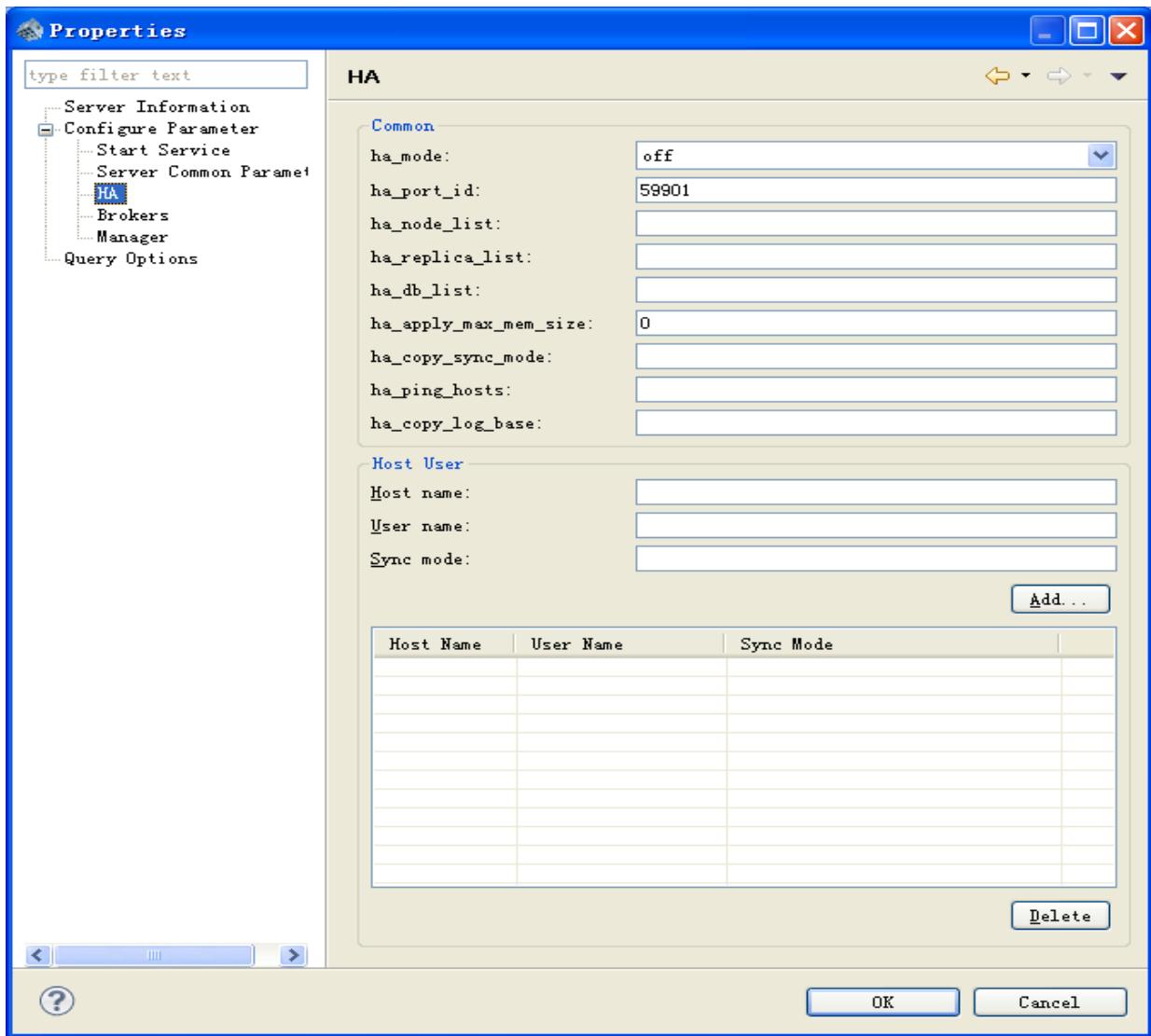
```

24# Database Administration Guide chapter on System Parameters
25
26# Service section - a section for 'cubrid service' command
27[service]
28
29# The list of processes to be started automatically by 'cubrid service start' c
30# Any combinations are available with server, broker and manager.
31service=server,broker,manager
32
33
34# Common section - properties for all databases
35# This section will be applied before other database specific sections.
36[common]
37
38# TCP port id for the CUBRID programs (used by all clients).
39cubrid_port_id=1544
40
41# Maximum number of locks acquired on individual instances of a
42# class before the locks on the instances are escalated to a class lock
43lock_escalation=100000
44
45# The maximum number of concurrent client connections the server will accept.
46# This value also means the total # of concurrent transactions.
47max_clients=50
48
49# Number of sort buffer pages
50# sort_buffer_pages (16 pages) * DB page size (4KB) * number of threads
51sort_buffer_pages=16
52

```

Support new cubrid_ha.conf configuration file parameter

1. Support by host Properties



2. Support by properties editor

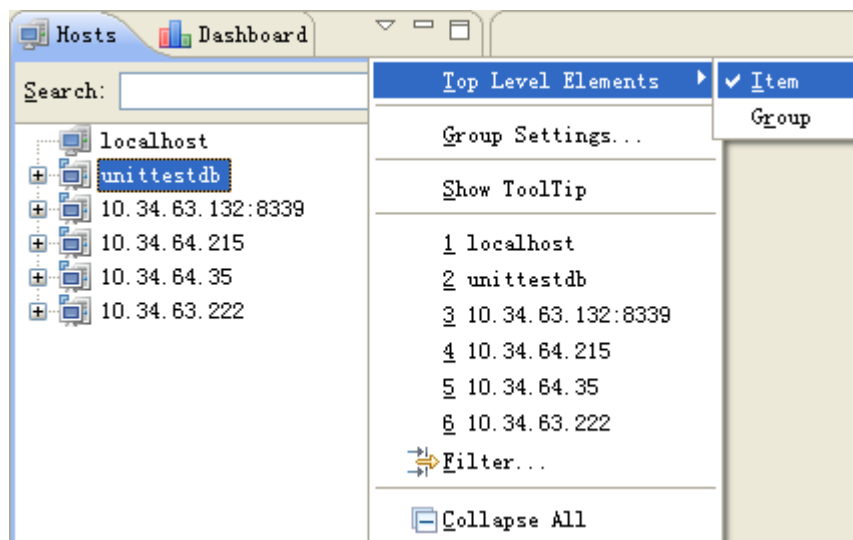
```

*Edit cubrid_ha.conf - unittestdb@unittestdb:8333
18#
19# cubrid_ha.conf
20#
21
22# For complete information on parameters, see the CUBRID
23# Database Administration Guide chapter on System Parameters
24
25[common]
26ha_mode=yes
27ha_port_id=59901
28ha_node_list=foo@apple:banana
29ha_db_list=+db
30ha_apply_max_mem_size=300
31ha_copy_sync_mode=sync:sync
32
33# '[%host-name|user-name]' type of section is available
34# '*' is special type of user-name that means the all users.
35# Parameters in each section can redefine the all parameters for CUBRID H
36
37[%apple|*]
38ha_copy_sync_mode=sync:async
39
40[%banana|*]
41ha_copy_sync_mode=sync:async
42
43[%banana|monkey]

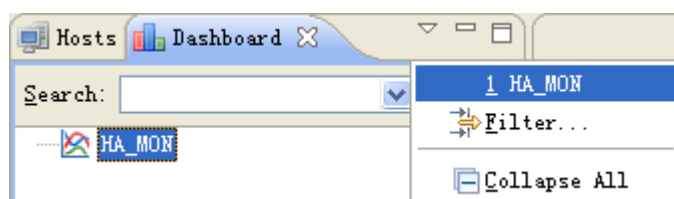
```

Add host navigator menu and dashboard navigator menu

1. Host navigator menu.

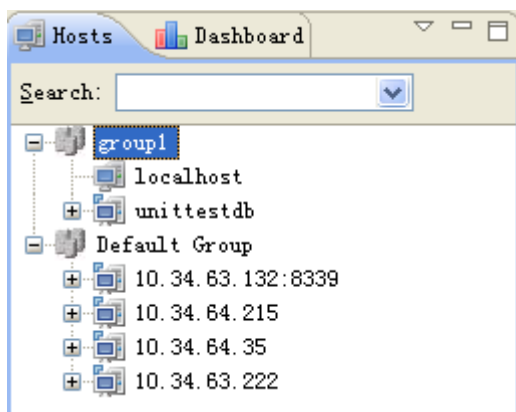


2. Dashboard navigator menu



2. Top Level Elements

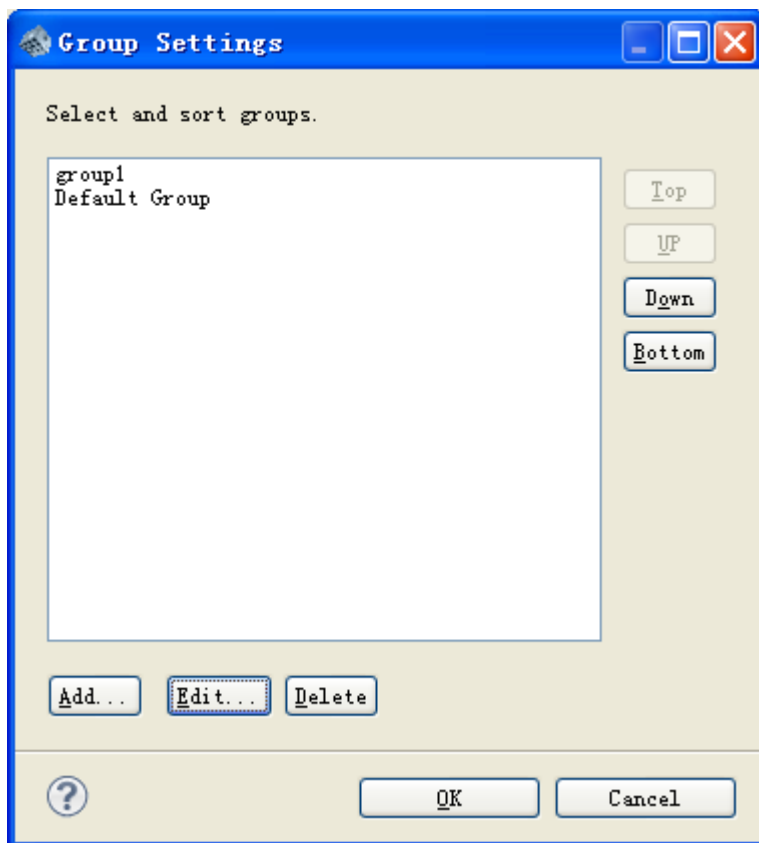
This menu can control the top level element type of the host navigator. When Item is checked, the host navigator top level element is host. If Group is checked, the top level element is group.



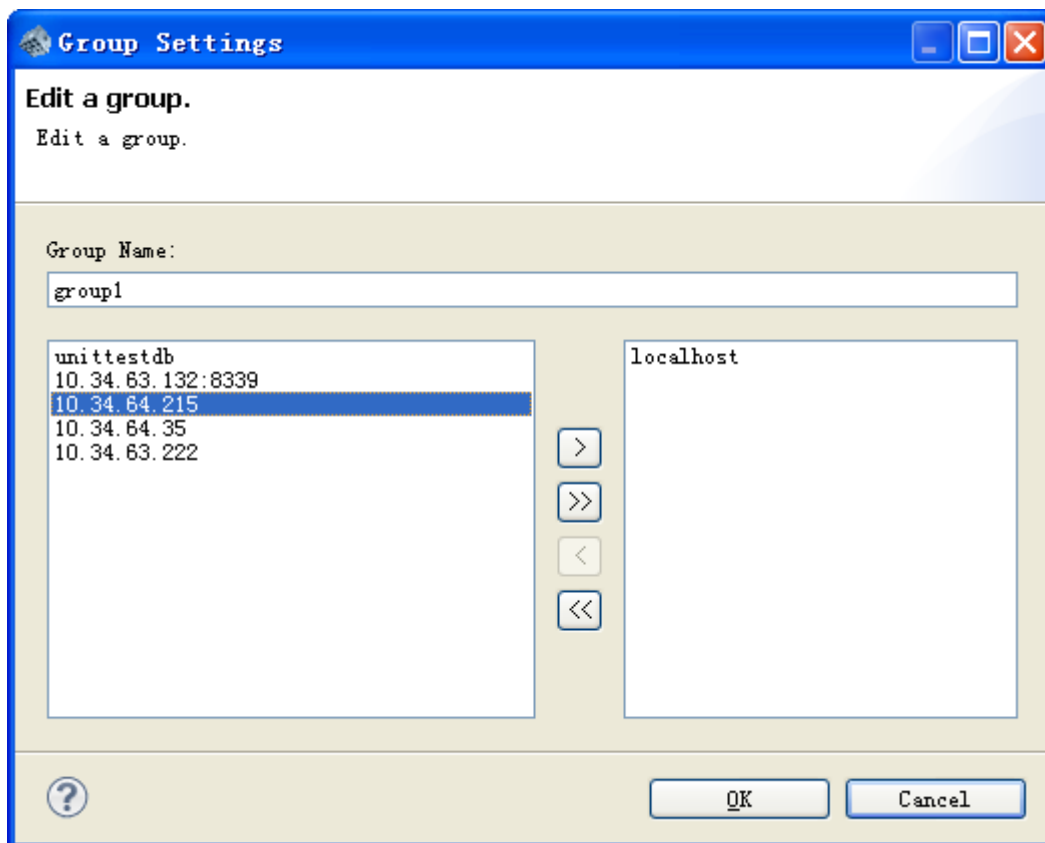
3. Group Settings...

This function can manage the group including sort ,add ,edit and delete group.

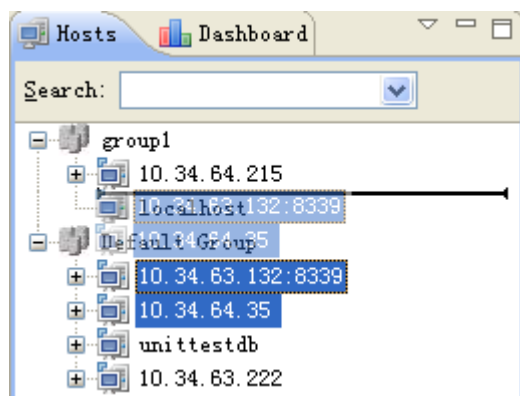
(1) Group settings dialog can show all groups and sort group



(2) Add or edit group dialog



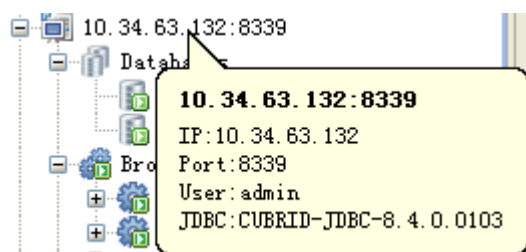
(3) Group setting also support to group by drag and drop



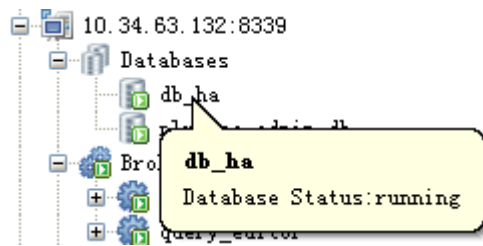
4. Show ToolTip

This function can support to show tooltip text for host and database and broker.

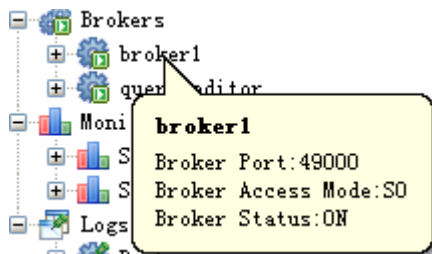
(1) Host tooltip text



(2) Database tooltip text



(3) Broker tooltip



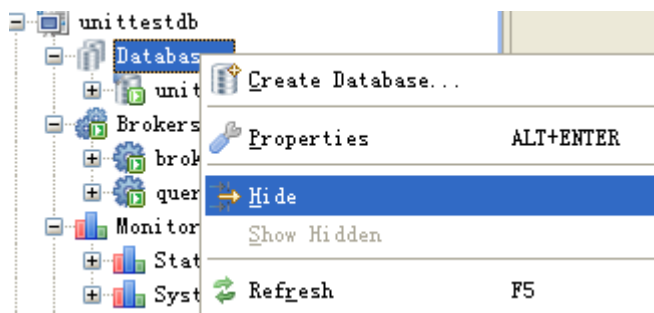
5. Top Level element filter and filter...

(1) Filter by view menu

The navigator menu will show all the top level elements in host navigator or dashboard navigator. You can check or uncheck to control whether show them.

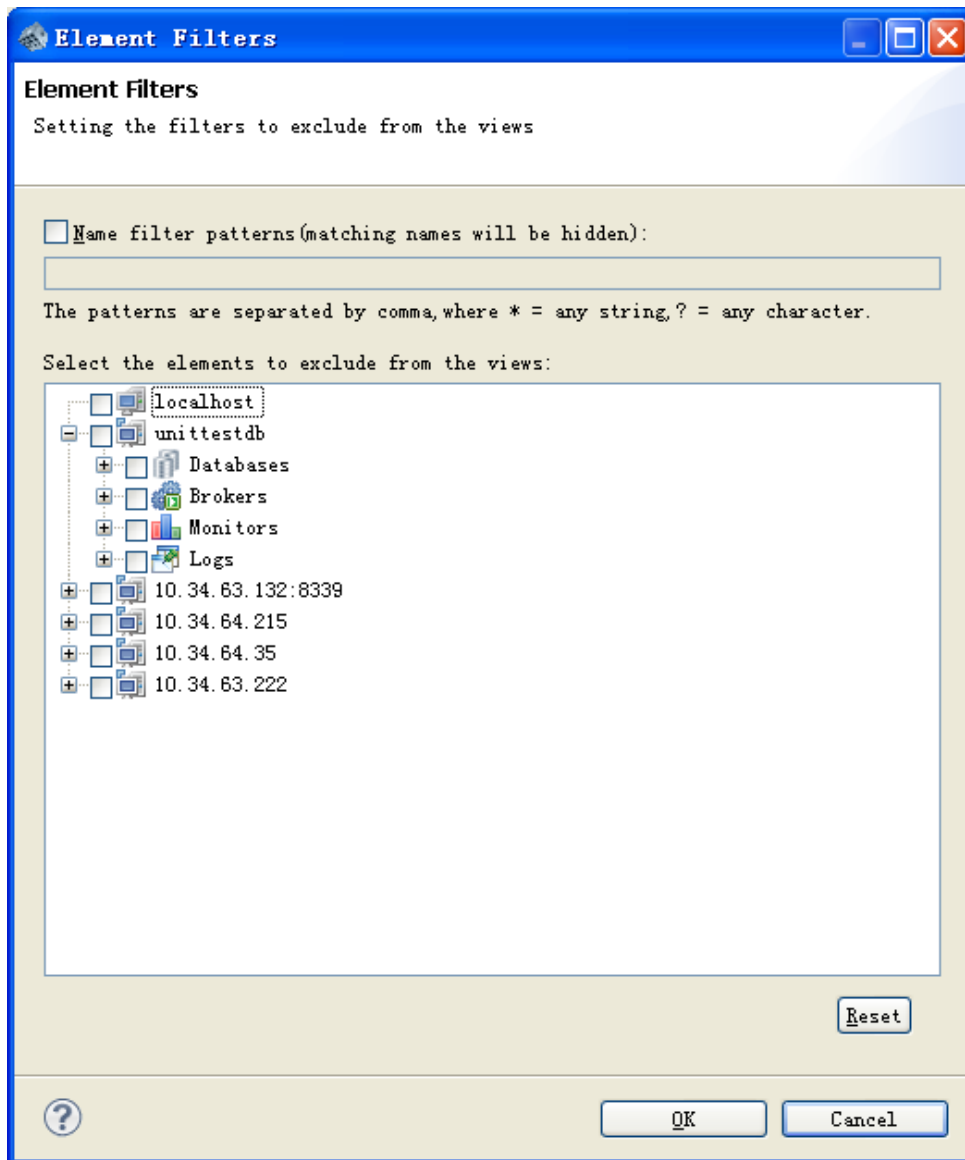
(2) Filter by item menu

Every element's context menu will include [Hide] and [Show Hidden] menu item



(3) Filter...

Click the Filter... navigator menu item to pop up the filter dialog



(1) Can filter by the elements name patterns, * stand for any string, ? stand for any character

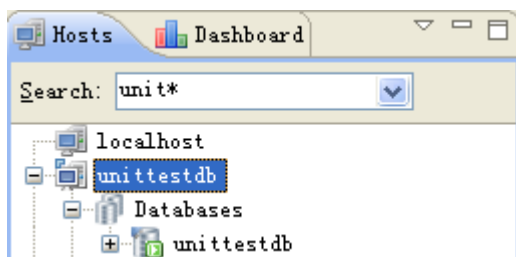
(2) Can filter every elements

6. Collapse all

Collapse all tree item.

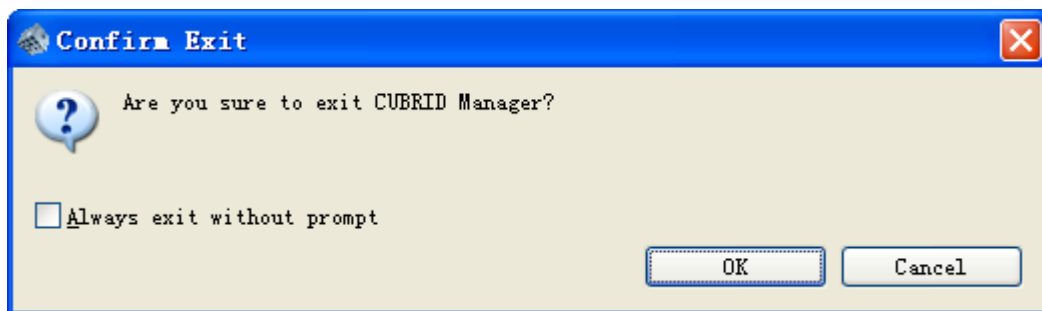
Add navigator search combo

Add the navigator search combo to support search the navigator item. Press Enter key to start to search, Press F3 to search the next.

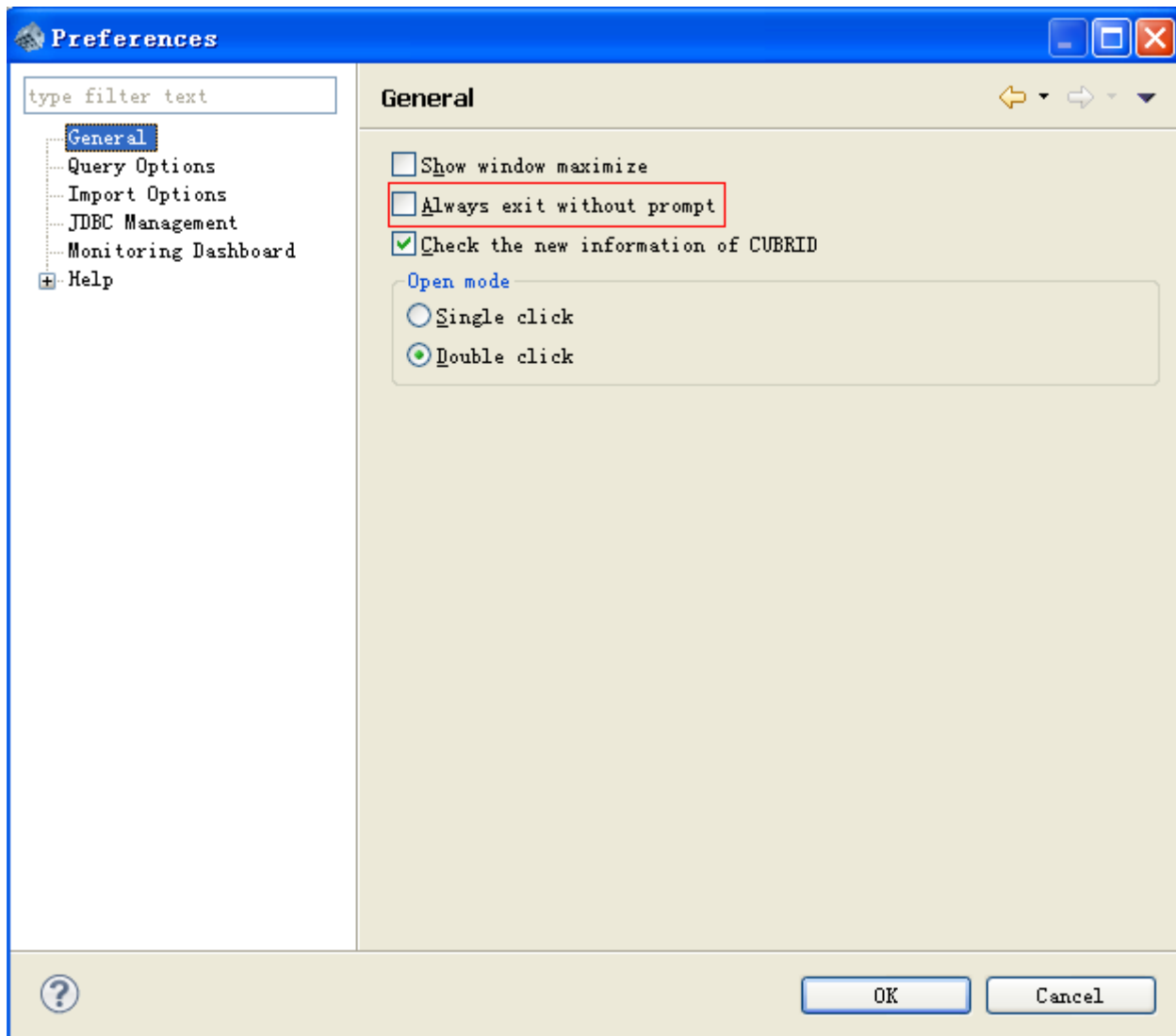


Can customize the prompt function when CUBRID Manager exit

1. When close CUBRID Manager, will pop up the prompt dialog. You can set whether prompt on exit

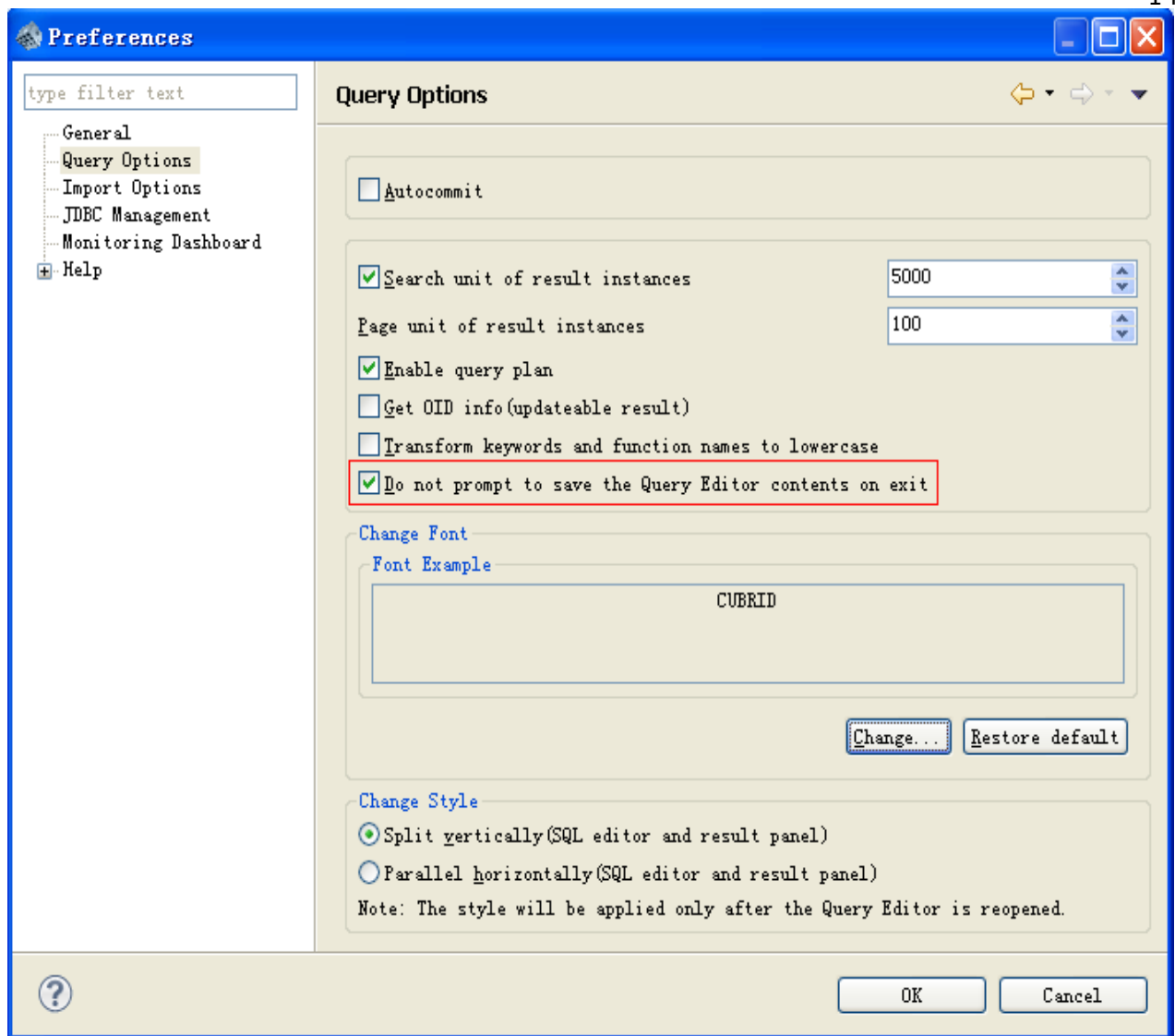


2. You can also customize the prompt function in Preferences/General Section

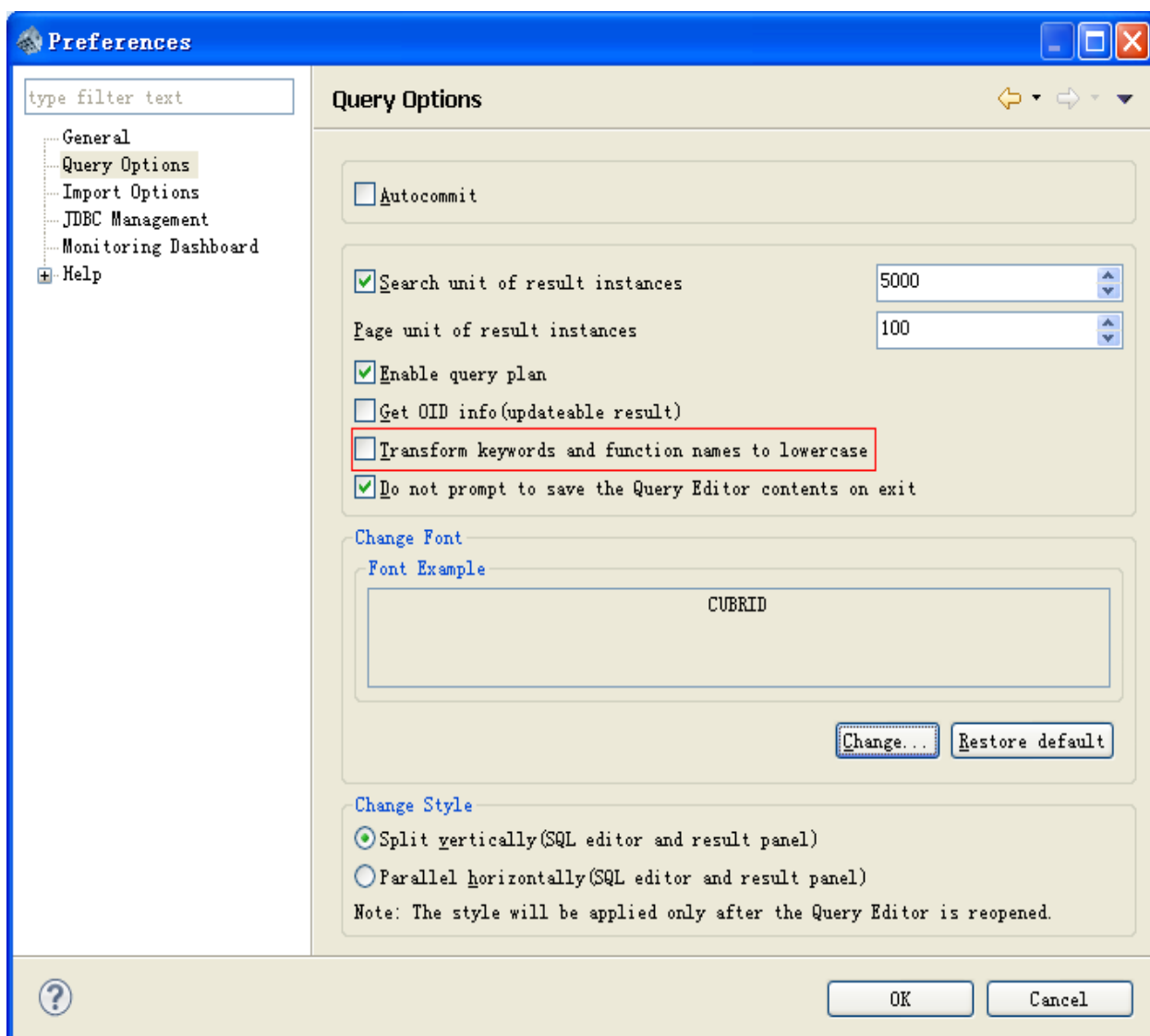


Can customize the prompt function when query editor exit

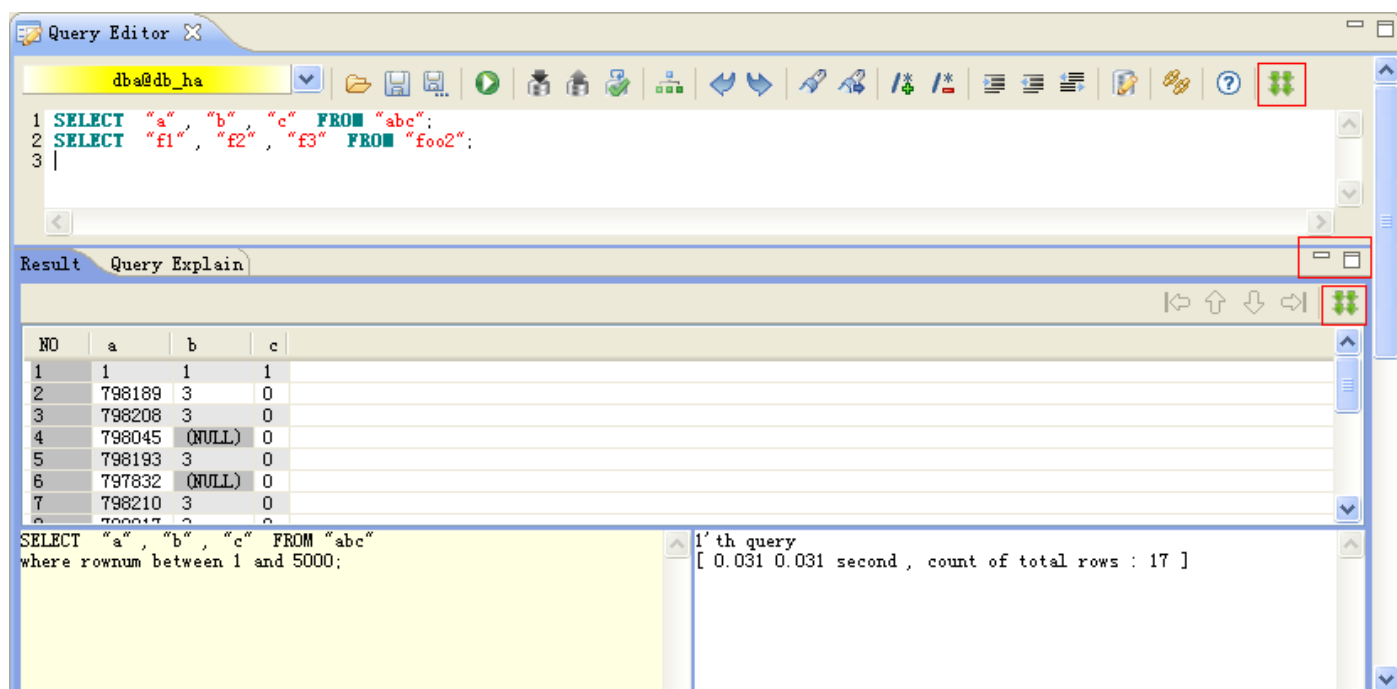
1. When query editor close, if change the editor content, will open the saved dialog. This is annoyed. Now, you can customize whether open the saved dialog.



Can customize keywords and functions name lowercase/uppercase
when edit SQL in query editor

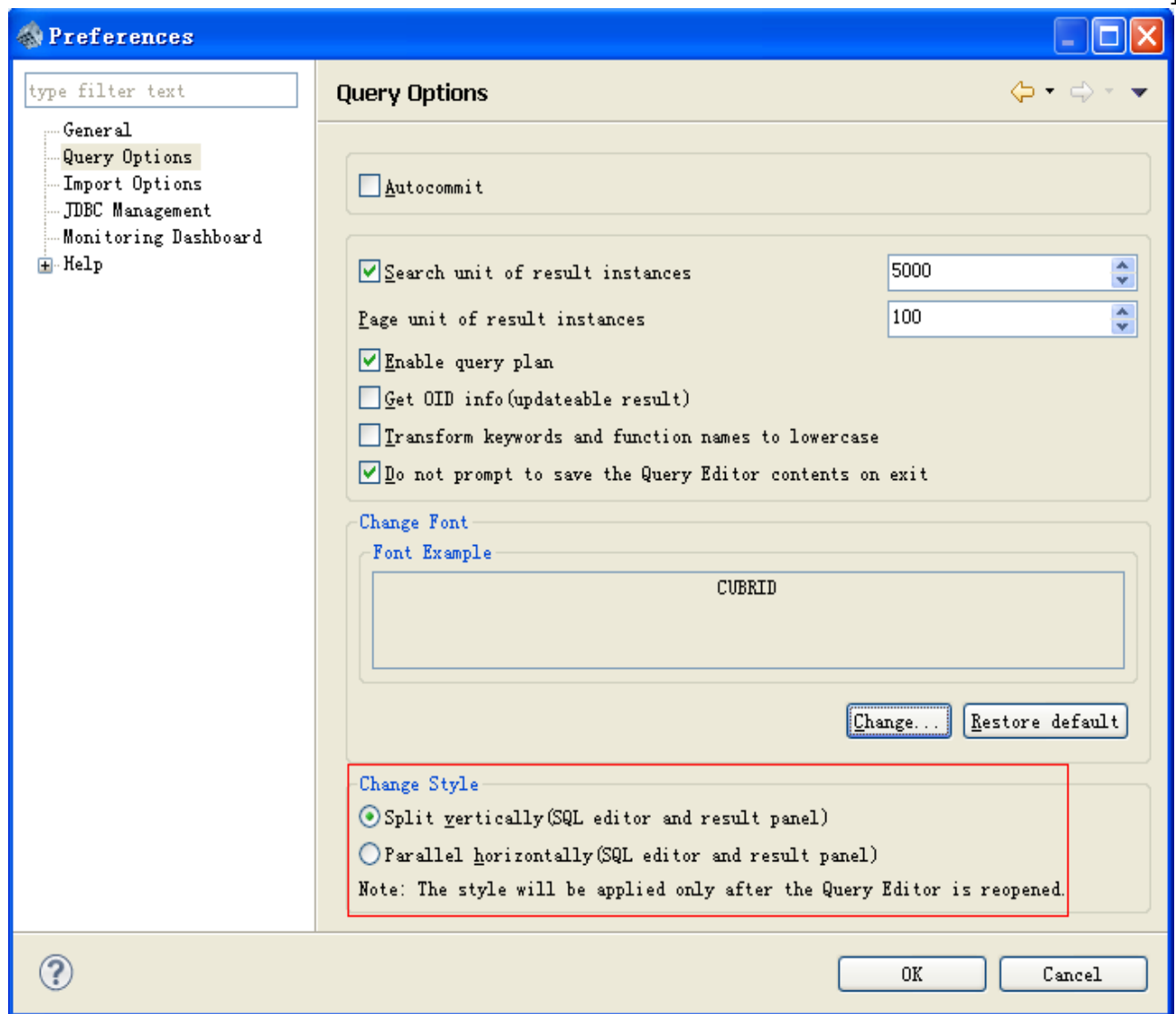


Can maximize and minimize the SQL editor panel and the query result panel and log panel

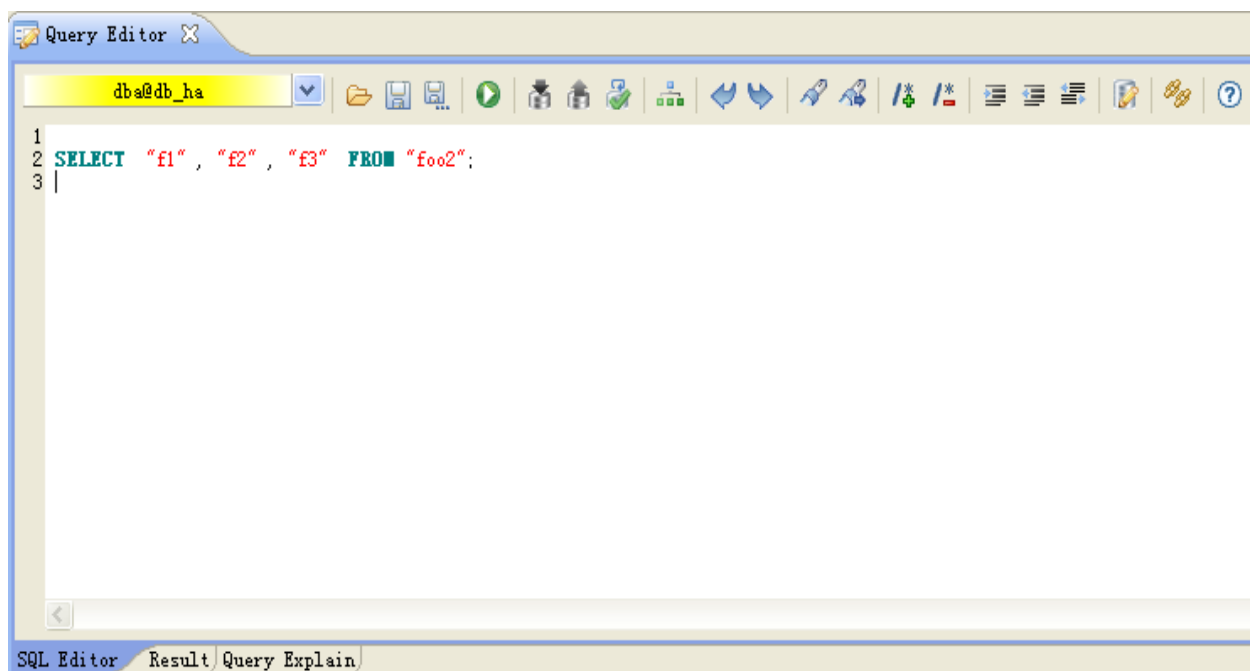


Can customize the query editor layout style

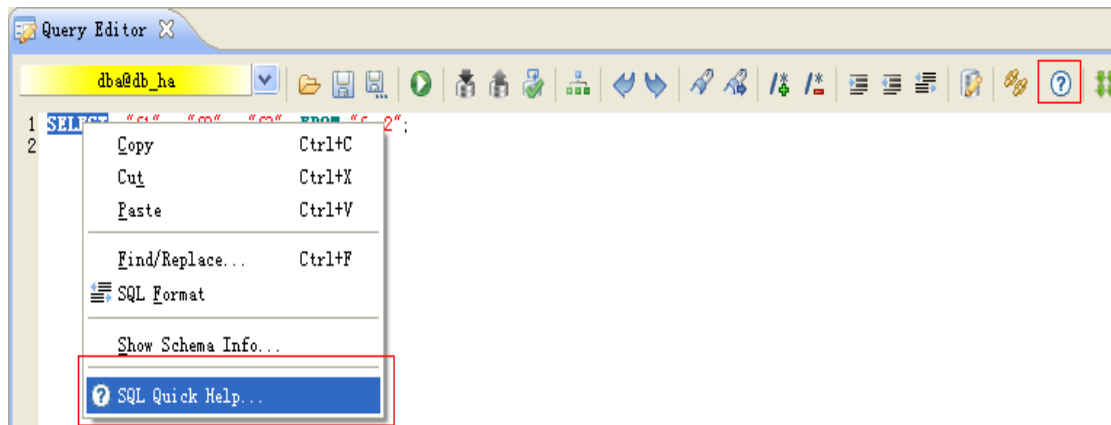
1. Can customize the query editor layout style by Preference/Query Options



2. When style is Parallel horizontally, refer to the below.



SQL quick help function in query editor

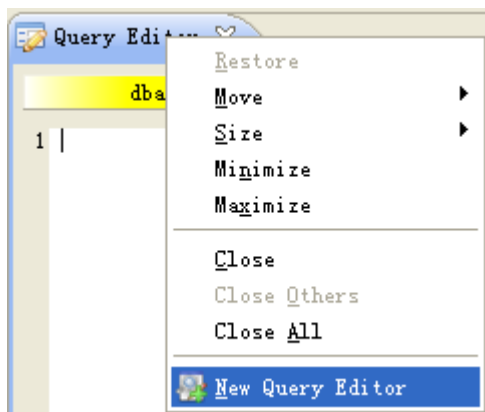


Press Ctrl+Enter can execute the SQL in cursor position

1. When press Ctrl+Enter, can execute the SQL in cursor position
2. Can select the executed SQL

New query editor more conveniently

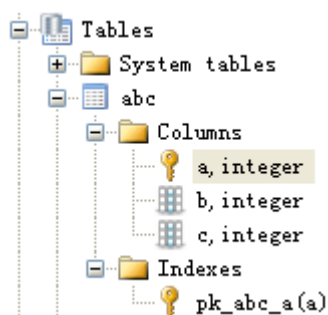
1. Add menu[New Query Editor] in query editor menu



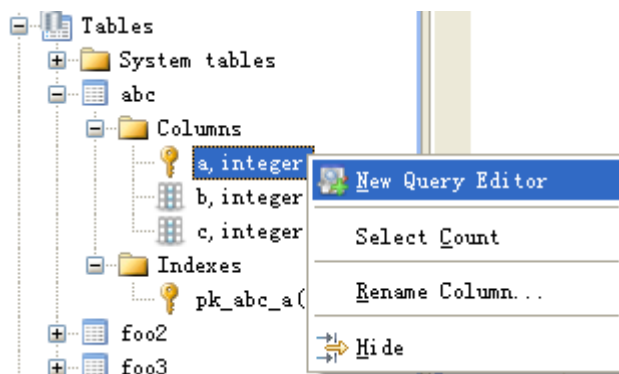
2. Add menu [New Query Editor] in all tables and columns and view context menu

Add table columns and index navigator function and the related actions

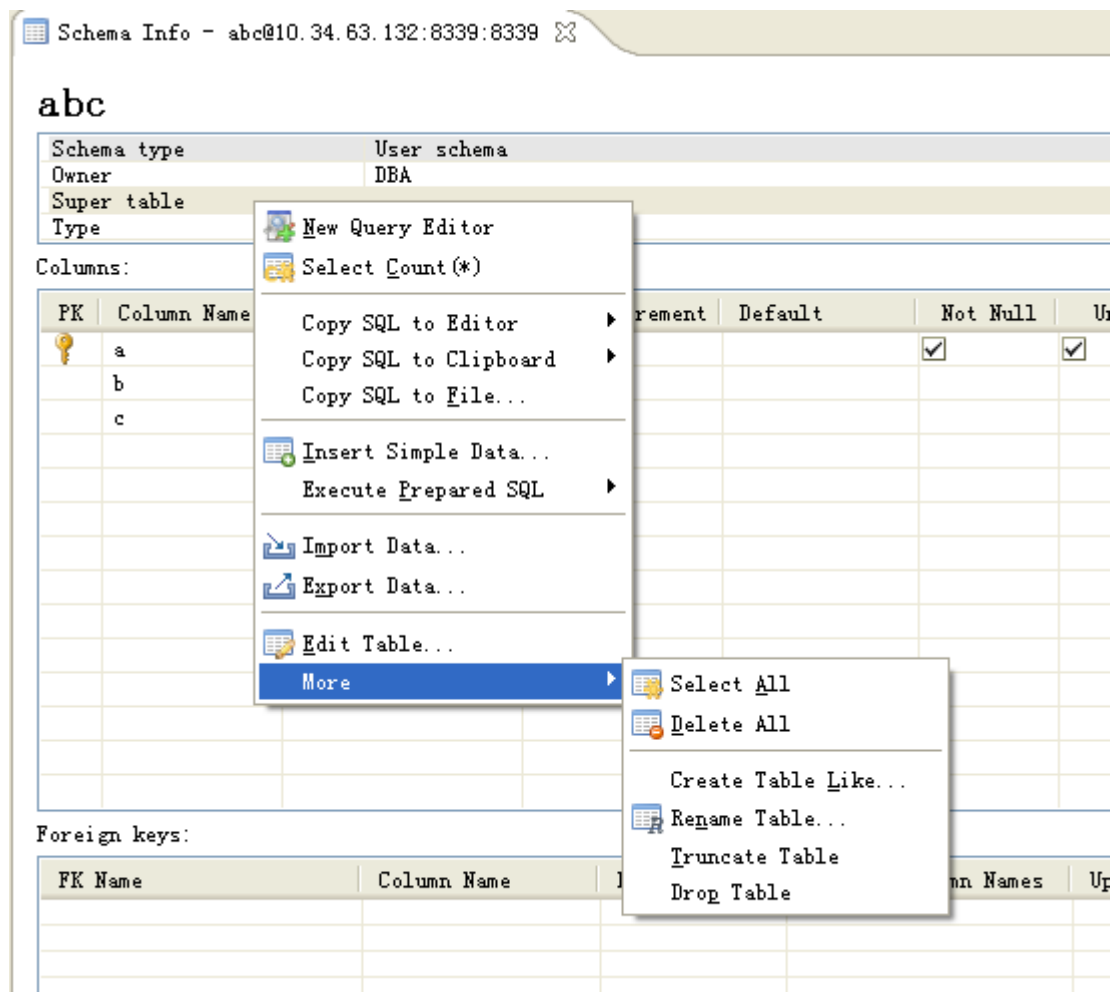
1. Table columns and indexes navigator function



2. Related actions



Add the table context menu in schema information panel



Can copy the column name or table name or view name by CTRL+C

1. Can copy the column name or table name or view name in navigator by CTRL+C
2. Can copy the column name and index name by CTRL+C

PK	Column Name	Data Type	Auto Increment	Default
	id	INTEGER	<input checked="" type="checkbox"/>	
	name	VARCHAR (50)		
	ip	VARCHAR (20)		
	modulename	VARCHAR (100)		
	description	VARCHAR (1024)		

Add a new tool “cm_admin” in LINUX environment to control CUBRID

Manager user

The “cm_admin” tool supports Add/Delete/Update/View operations on CUBRID Manager user.

The following information will be displayed upon entering cm_admin in the prompt.

```
cmserver utility, version R0.1
usage: cm_admin <utility-name> [args]
Available Utilities:
  adduser
  deluser
  viewuser
  changeuserauth
  changeuserpwd
  adddbinfo
  deldbinfo
  changedbinfo
```

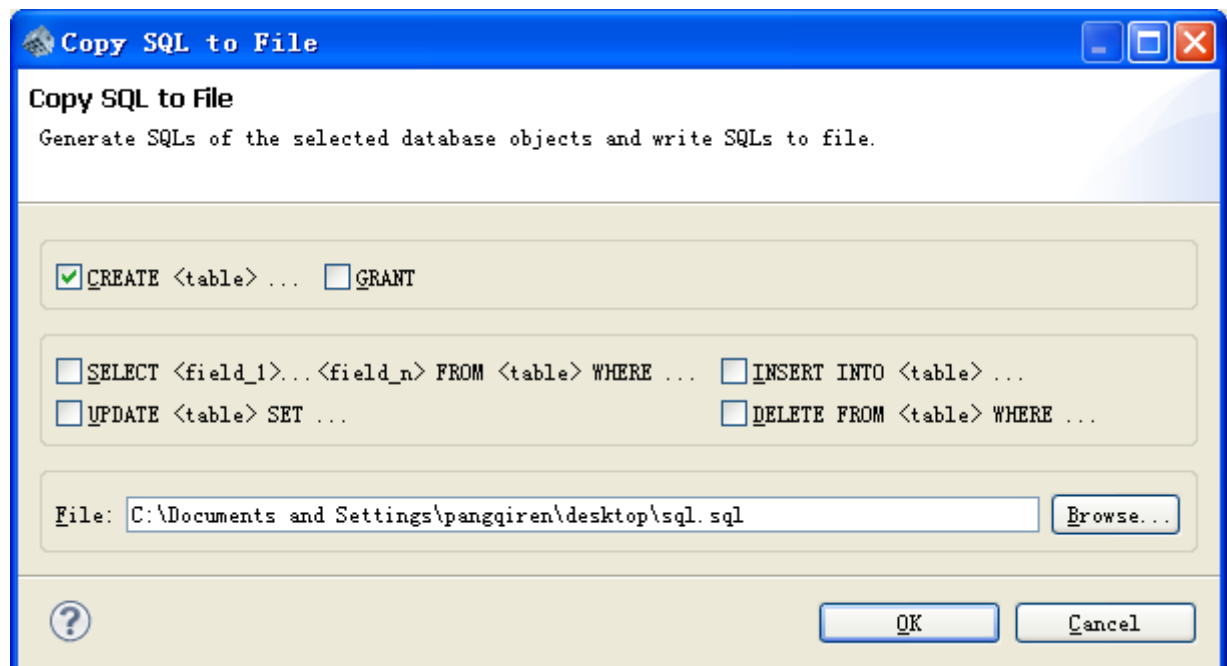
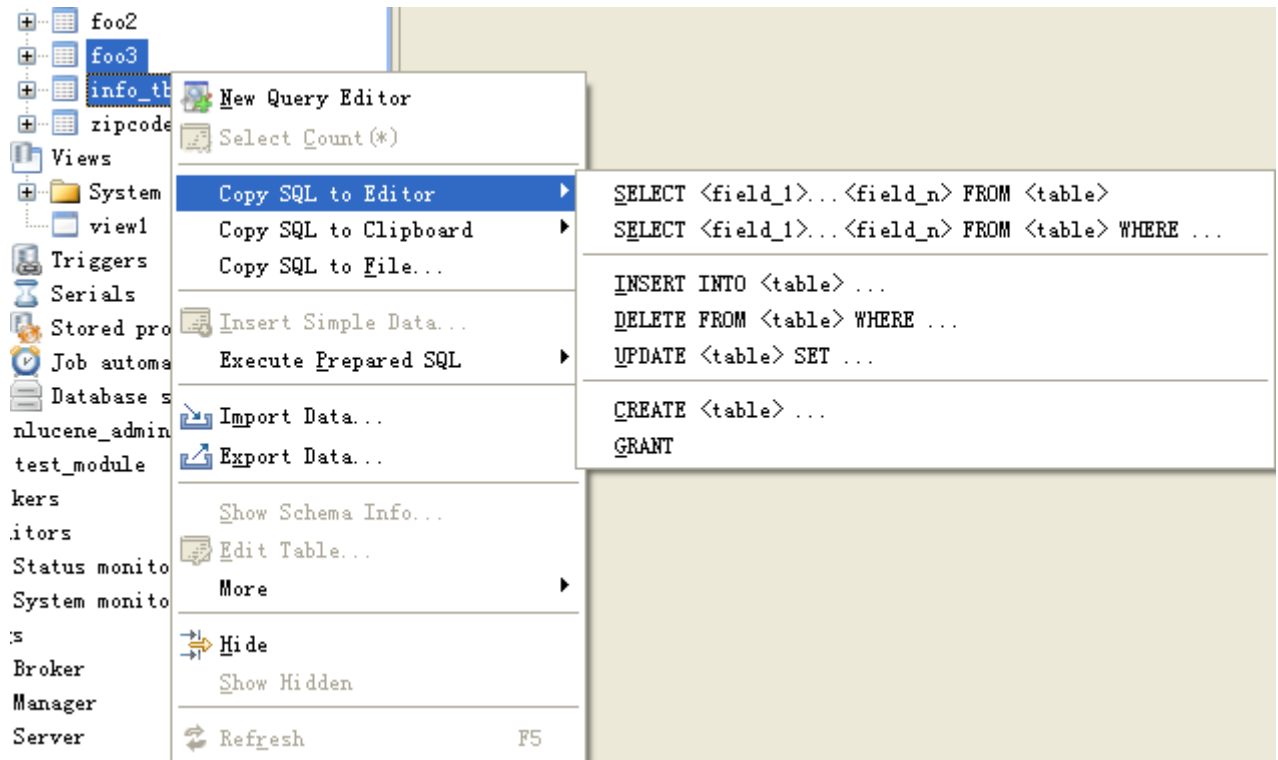
The following commands are supports:

1. adduser: Add a new CUBRID Manager user.
2. deluser: Delete an exist CUBRID Manager user.
3. viewuser: View the exist CUBRID Manager user.
4. changeuserauth: Change the authority of the specified user, such as unicas authority, dbcreate authority, monitoring authority.
5. changuserpwd: Change the password of the user, you need to know the old password or the password of “admin” user.
6. adddbinfo: Add a database information to a user.
7. deldbinfo: Delete the database information of a user.
8. changedbinfo: Update the information of the database, such as uid, host, port.

2. Enhanced Features

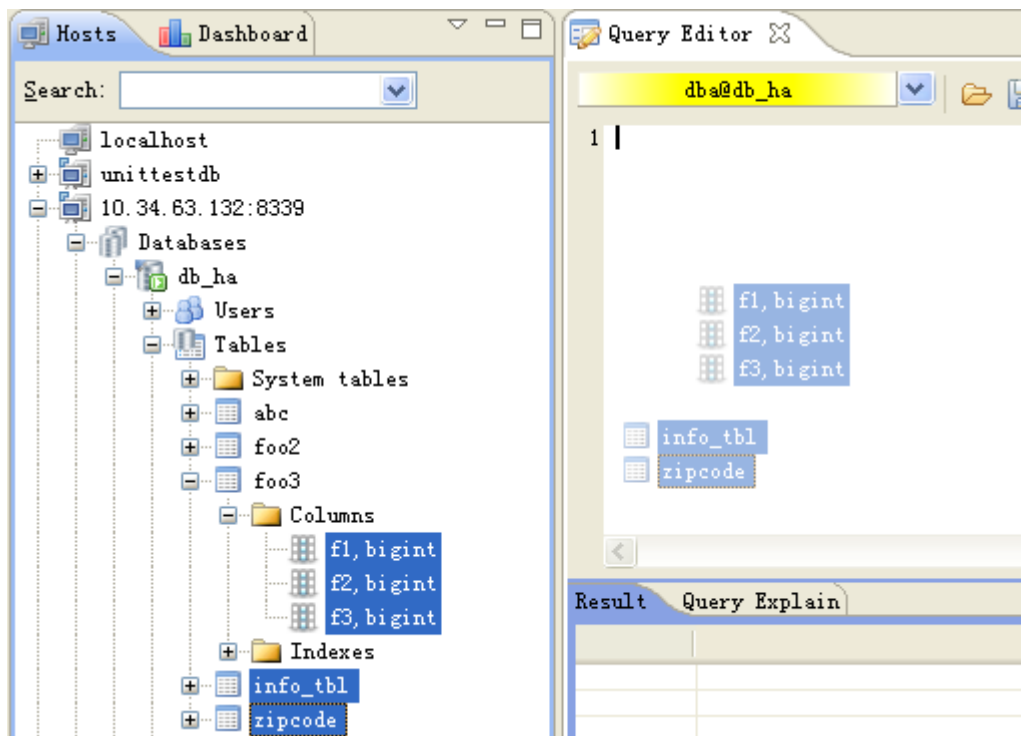
Improve the SQL DDL/DML copy and paste functions

1. Can support multi table DDL/DML copy and paste
2. More DDL/DML SQL type
3. can support copy DDL/DML to clipboard or query editor or file



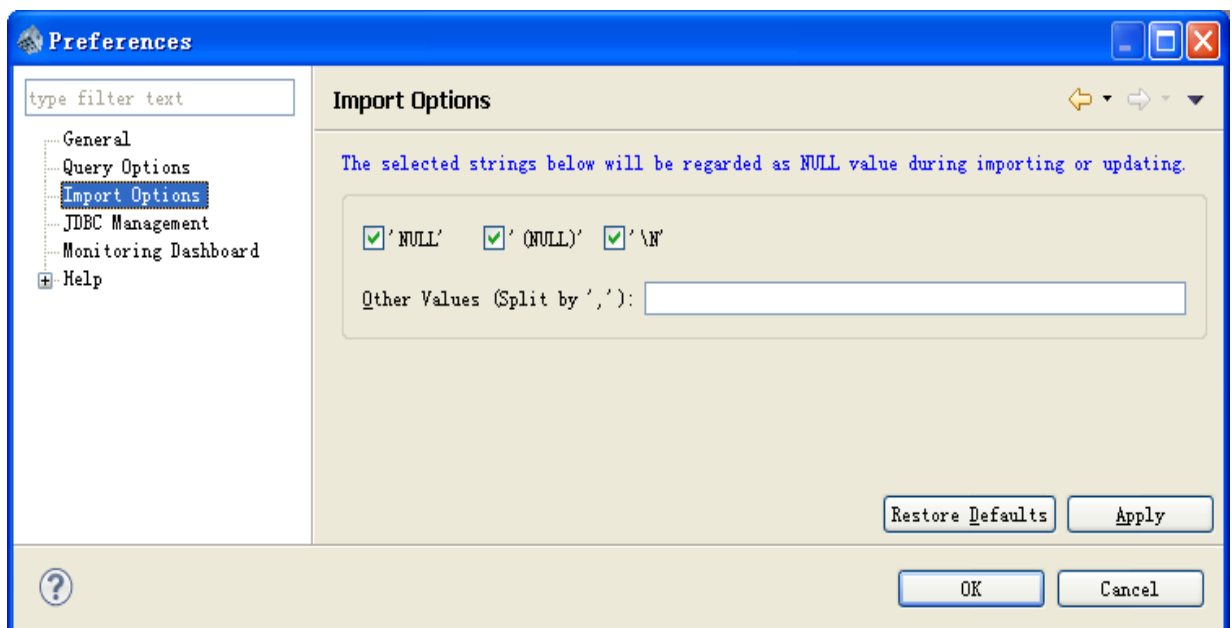
Improve the drag and drop functions

1. Now can support drag and drop multi tables or columns



Improve the import data functions

1. Now can customize the NULL value when import and update the table data, you can customize by preference/Import Options



2. Can import data by multi-thread
3. Now can customize the error handle way when import data or update the data by file
 - (1) Ignore the error and set error values to null. After import, if have error, will show these error report.
 - (2) Break. when encounter the error, break at once.

Import Data

Please select the import file, data columns and imported table columns.
And you can enter a different charset in the "File Charset".

Target table: testatrttable

JDBC charset: UTF-8

File name: C:\Documents and Settings\pangqiren\桌面\test1.c Browse...

File charset: GBK

Total lines: 120000

Thread count: 5

Commit lines once: 5000

Mapping between file columns and table columns

☐ Use the first line data as column names

File Column	Table column
Column 0	code
Column 1	name
Column 2	gender
Column 3	nation_code

Delete Up Down Delete

Error-Handling: ☒ Ignore and set error values to NULL ☐ Break

Import Cancel

Execute Defined SQL

Set mapping between prepared statement parameters and data from the selected file and execute the self-defined SQL. The SQL must have parameters(?).

Self-defined SQL

```
INSERT INTO "testattrtable" ("code", "name", "gender", "nation_code") VALUES (?, ?, ?, ?);
```

Select File

File name:

File charset: Total lines:

Thread count: Commit lines once:

JDBC Charset

JDBC charset:

Mapping for Parameters and Column

Mapping between parameters and file columns

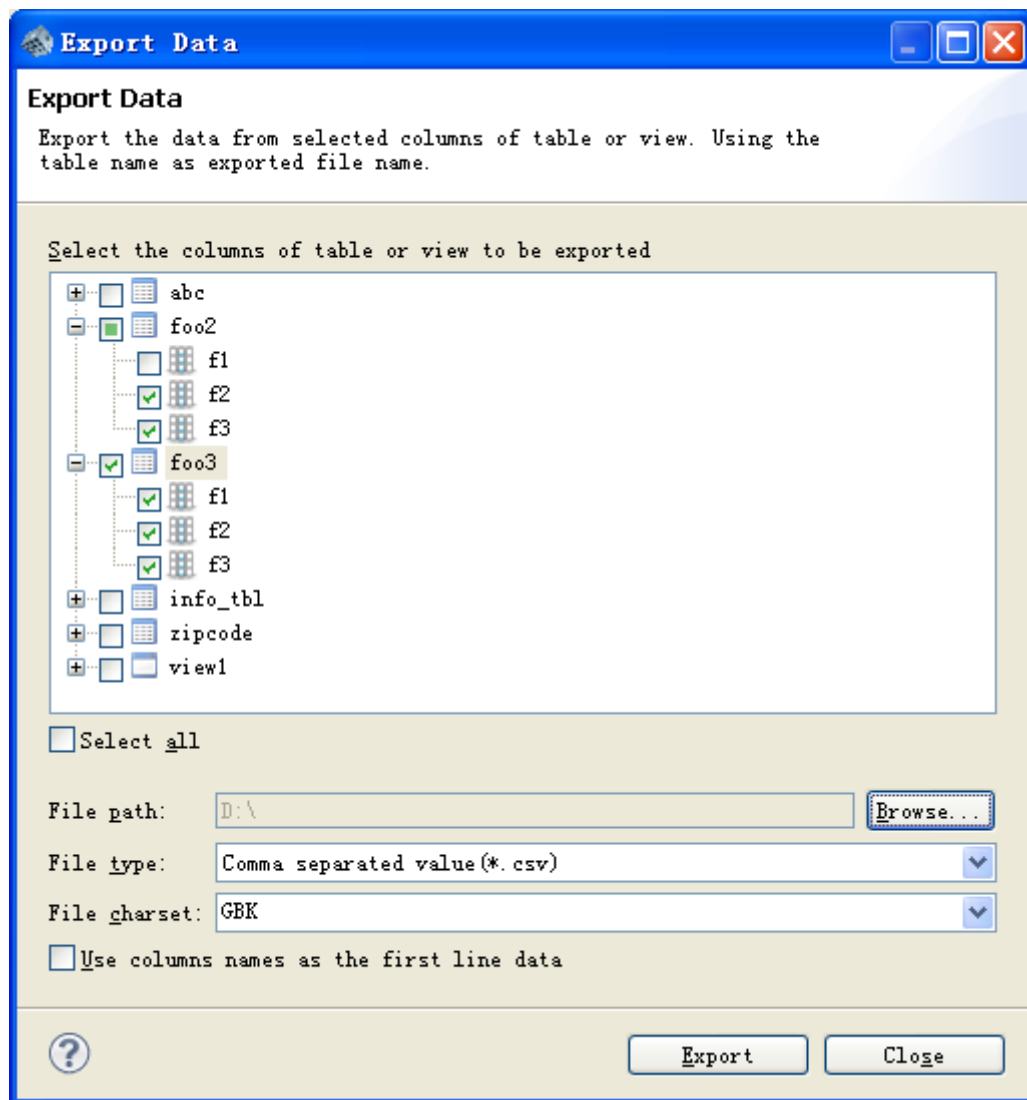
☐ Use the first line data as column names

Parameter Name/Index	Parameter Type	File Column
code	INTEGER	
name	VARCHAR(40)	
gender	CHAR(1)	
nation_code	CHAR(3)	

Error-Handling: ☒ Ignore and set error values to NULL ☐ Break

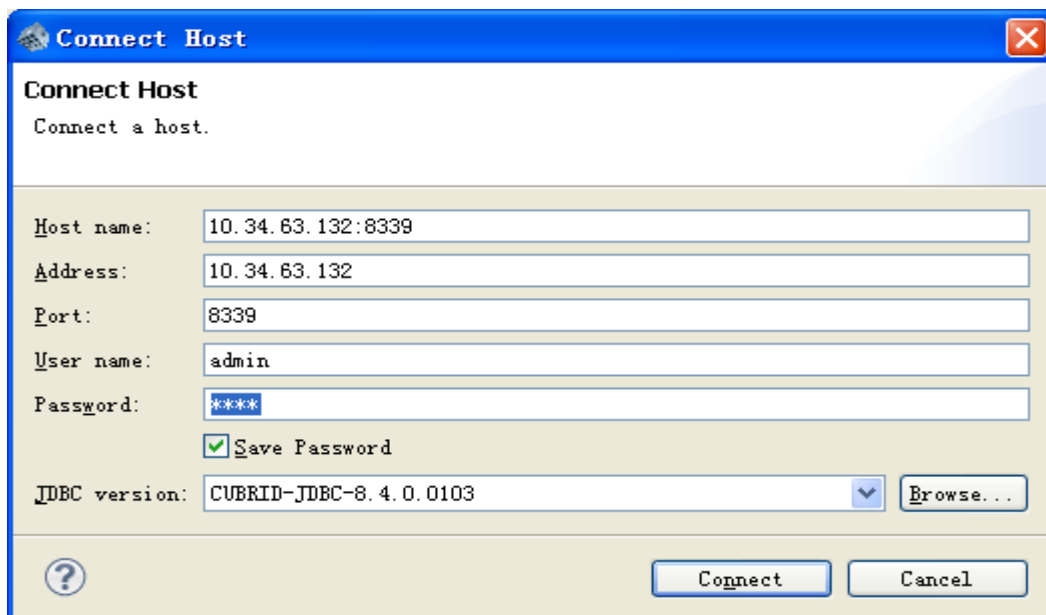
Improve to export data functions

1. Now when export table, can select columns or tables

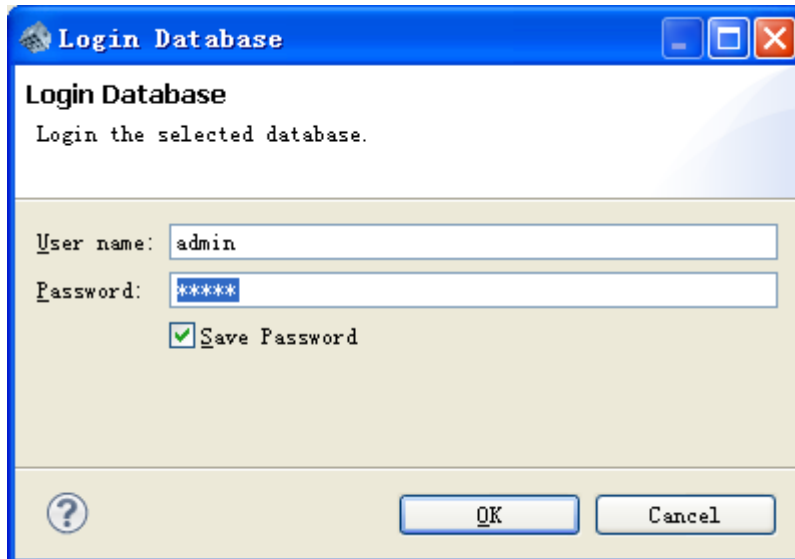


Improved the login way and can save password in local and auto login
by double click host or database

1. Improve the host login dialog, can save password in local and can browse the JDBC driver conveniently



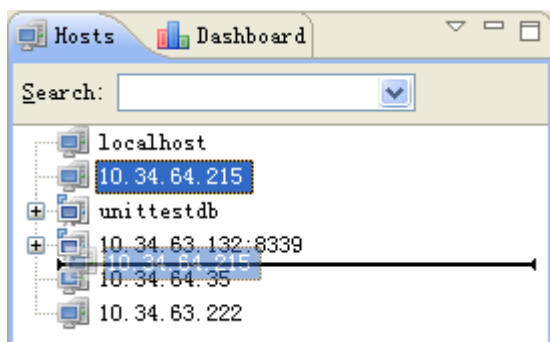
2. Improve the database login dialog, can save password in local



3. After save password in local, when double click this host or database, will auto login
4. After login, also can modify the login host or database

Can sort the host by drag and drop

You can drag the hosts to any position in navigator



Support index prefix length

1. Can set the prefix length for column, now only support that the index type is index and the data type is CHAR, VARCHAR, STRING, BIT, BIT VARCHING, NCHAR, NCHAR VARYING

Support the new broker parameters and server parameters configuration

Parameter Name	Parameter Value	Configuration file
ACCESS_MODE	Support new value PHRO	cubrid_broker.conf
PREFERRED_HOSTS		cubrid_broker.conf
ENABLE_ACCESS_CONTROL	ON/OFF	cubrid_broker.conf
ACCESS_CONTROL_FILE		cubrid_broker.conf
HA_MODE	Support new value replica	cubrid.conf/cubrid_ha.conf
data_buffer_size	Unit is K,M,G,T	cubrid.conf
log_buffer_size	Unit is K,M,G,T	cubrid.conf
sort_buffer_size	Unit is K,M,G,T	cubrid.conf
ENABLE_IP_CONTROL	Yes/no	cubrid.conf
ip_control_file		cubrid.conf

Improve the HA dashboard function to support HA

1. Support replica node
2. Support new database status Maintenance

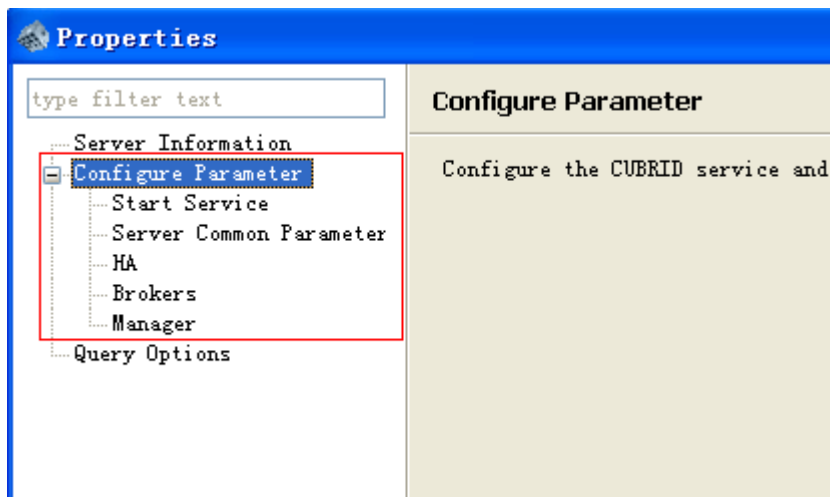
Support the new added functions and keywords in query editor

1. Can highlight these keywords and functions in query editor
2. Can prompt these keywords and functions when input in query editor

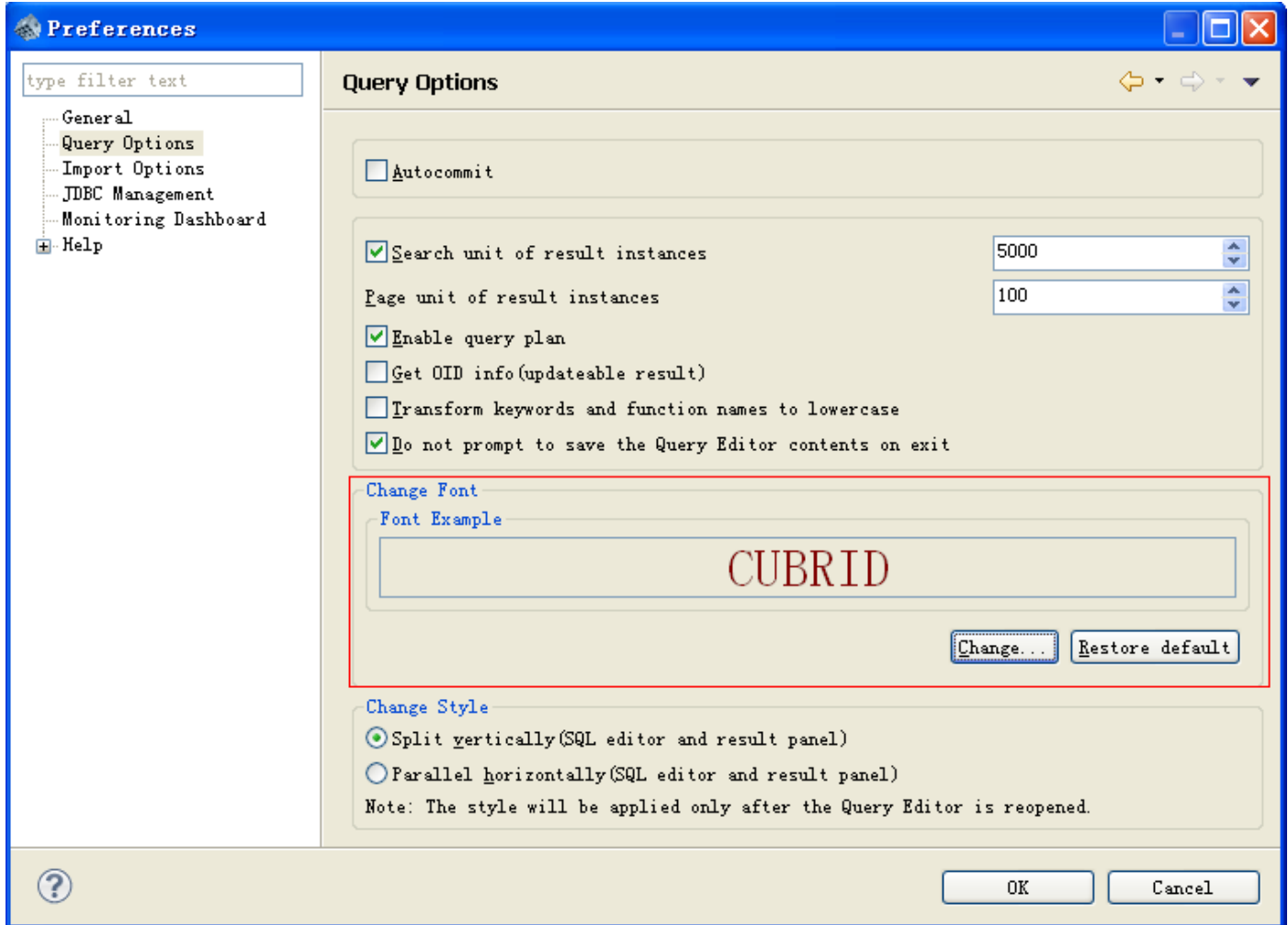
bit_to_blob	
blob_from_file	
blob_length	
blob_to_bit	
clob_from_file	
clob_length	
clob_to_char	
utc_time	
utc_date	
timediff	
dayofmonth	
dayofyear	
from_days	
index_cardinality	
like_match_lower_bound	BLOB
like_match_upper_bound	CLOB
maketime	COLUMNS
repeat	ELT
space	EXPLAIN
last_insert_id	GRANTS
sec_to_time	GROUP_CONCAT
substring_index	INDEXES
md5	KEYS
to_days	KEYLIMIT
time_to_sec	MEDIUMINT
typeof	SEPARATOR
from_unixtime	SHOW
weekday	STDDEV_POP
dayofweek	STDDEV_SAMP
version	TABLES
quarter	TINYINT
week	VAR_POP
	VAR_SAMP

When build and release the CUBRID Manager, add all JDBC driver

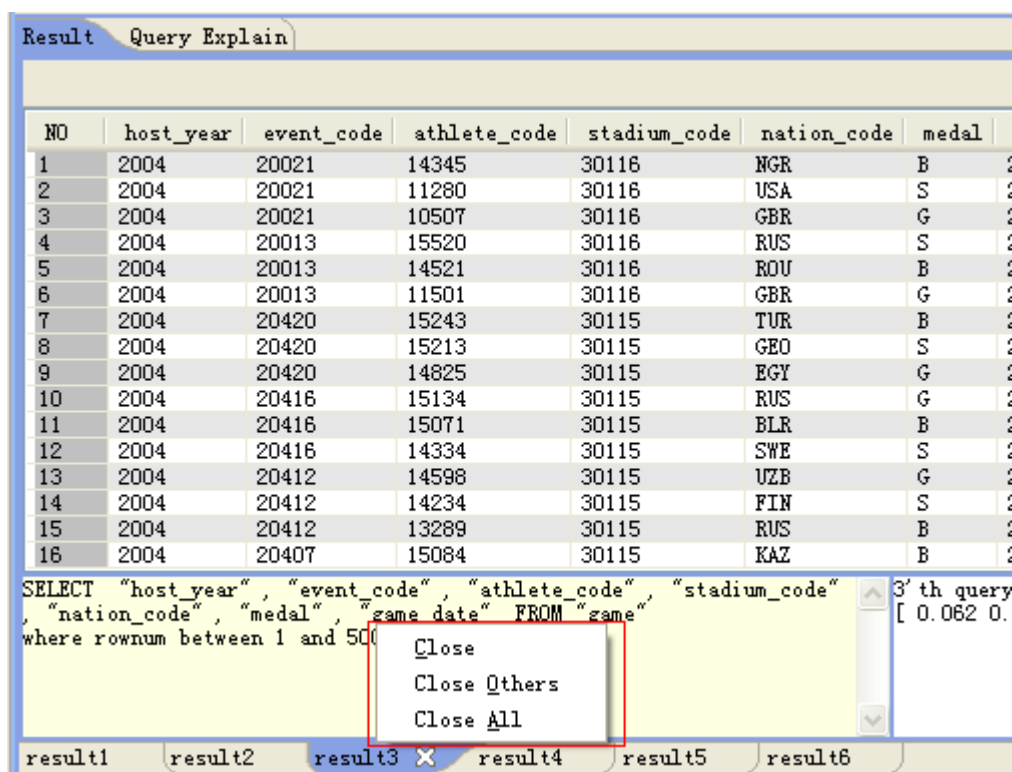
Category the configuration parameter related properties



Improve the query editor for font setting functions



Add [Close],[Close Others],[Close All] menu item for the query editor result tab and plan result tab



Improve log related functions

- (1) Can delete multi log file once
- (2) Fix bug that when open the log file or switch to the next page, the content flicker
- (3) Can fill in the charset to view log file

I the trigger created or edited UI

Create Trigger

Please input the below trigger information.

Trigger SQL Script

Trigger name:

Trigger Event

Event Target

Target table:

Target column:

Event Time

☒ BEFORE ☐ AFTER ☐ DEFERRED

Event Type

☒ INSERT ☐ STATEMENT INSERT
☐ UPDATE ☐ STATEMENT UPDATE
☐ DELETE ☐ STATEMENT DELETE
☐ COMMIT ☐ ROLLBACK

Event Condition

Options

Trigger Status

☒ ACTIVE ☐ INACTIVE

Trigger Priority

Priority:

Trigger Action

Execution Time

☒ DEFAULT ☐ AFTER ☐ DEFERRED

Action Type

☒ REJECT ☐ INVALIDATE TRANSACTION
☐ PRINT ☐ OTHER STATEMENT

SQL statements or print messages for action type

?

OK Cancel

Improve the serial created or edited UI

Create Serial

Create a serial

General SQL Script

Serial name: serial1

Start value: 0

Increment value: 1

Min value:

Max value:

Cache number:

☐ Cycle

☒ NOMINVALUE

☒ NOMAXVALUE

☒ NOCACHE

OK Cancel

3. Changed Features

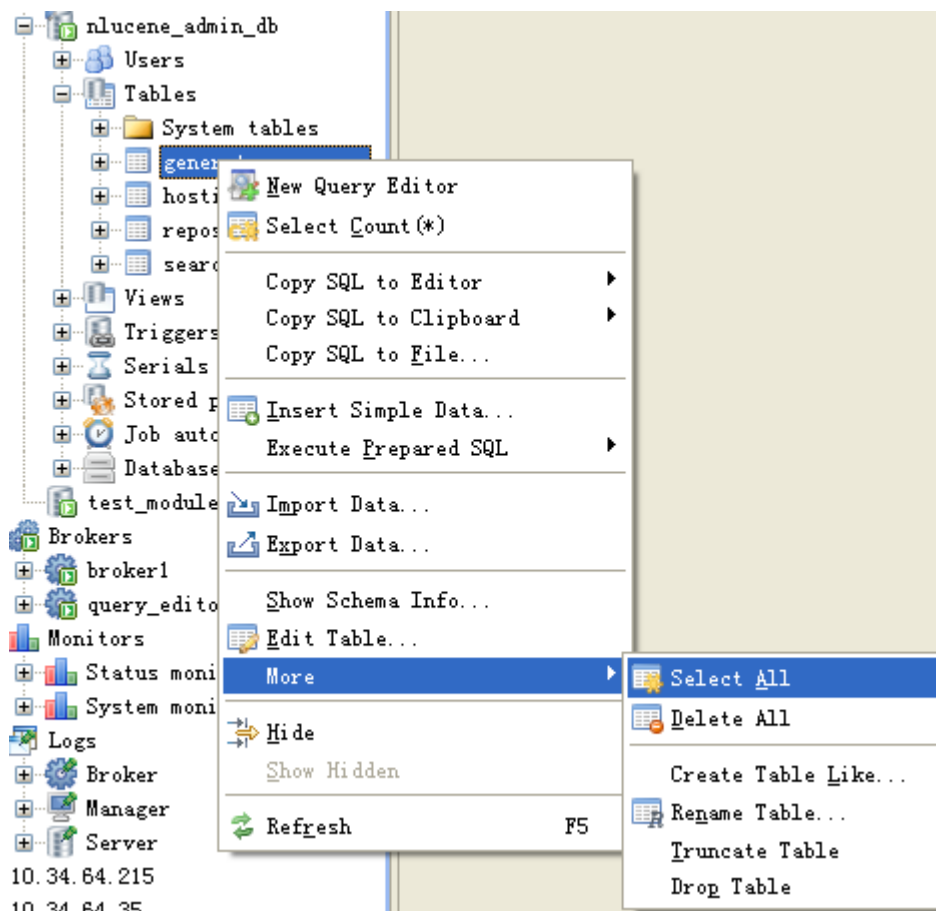
When import data, set the default thread count is 5 and default file type is csv.

When edit or add table column, if column data type is VARCHAR or NCHAR VARYING or BIT VARYING, the size is 4096 defaultly.

When open the query editor, the auto commit is unchecked defaultly.
When checked, show caution icon.

When broker access_mode is SO, the JDBC URL can not add host ip.

Adjust the table menu, put the dangerous menu to the next level menu



Fix bug that when admin login and set broker port, the broker port can not be saved.

Fix bug that When change the query editor panel size, the query editor toolbar can not show completely.

Add horizontal and vertical scrollbar to show all toolbar action

When add table or show table, can differentiate the primary key index and other index

1. Create table dialog

Create Table

Please input a table name and add columns

General **FK/Indexes** Partition SQL Script

Foreign keys:

FK Name	Column Name	Foreign Table	Foreign Column Names	Update Rule	Delete Rule	Cache Column

Add FK... Delete FK

Indexes:

Index Name	Index Type	On Column(s)	Index Rules
pk_table1_id	PRIMARY KEY	id	
name_index	UNIQUE	name	name ASC

Add Index... Delete Index

? OK Cancel

2. Table schema information panel

Schema Info - table1@unittestdb:8333

table1

Schema type	User schema
Owner	DBA
Super table	
Type	Table

Columns:

PK	Column Name	Data Type	Auto Increment	Default	Not Null	Unique	Shared	Inheritance	Table Column
	id	INTEGER			<input checked="" type="checkbox"/>	<input checked="" type="checkbox"/>			
	name	VARCHAR(100)				<input checked="" type="checkbox"/>			

Foreign keys:

FK Name	Column Name	Foreign Table	Foreign Column Names	Update Rule	Delete Rule	Cache Column

Indexes:

Index Name	Index Type	On Column(s)	Index Rules
pk_table1_id	PRIMARY KEY	id	
u_table1_name	UNIQUE	name	name ASC

Fix bug that if the data type is datetime, the data can not show 24 hours am or pm correctly

Fix bug that switch the next page in query editor result panel, the content flicker

Fix bugs that the SQL style can not show correctly in the below case

- (1) When have character `('',';',',` before or after the keywords and functions
- (2) When have both -- and /* */ in SQL